



True Two Plate Automation

For ELISA and Chemiluminescence (CLIA)



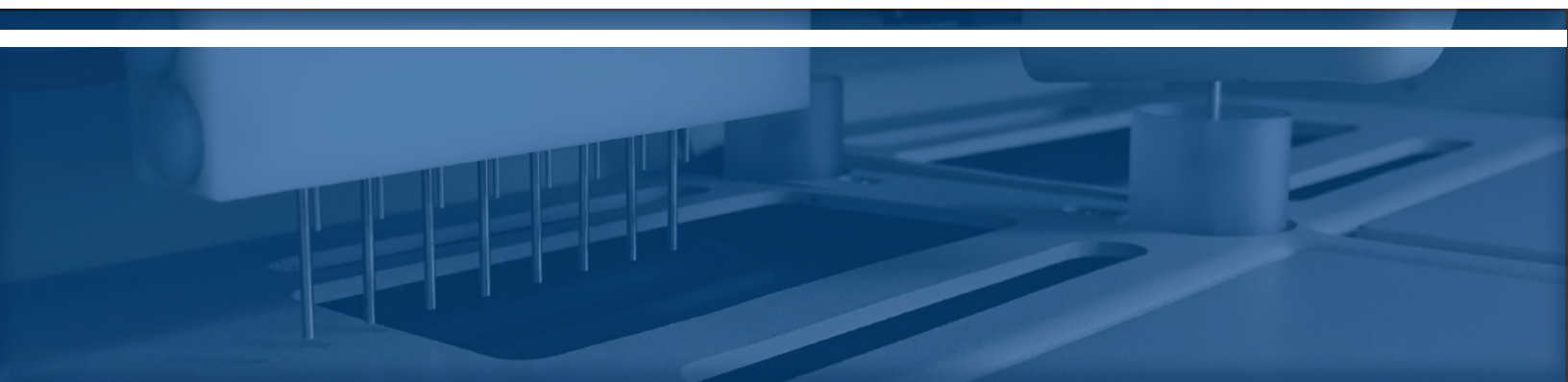
Automated Two-plate ELISA/CLIA Analyzer

ChemWell 2 Automated ELISA/Chemiluminescent analyzer offers a true two-plate solution for processing microwell ELISA and CLIA assays in a robust walk away system.

- Separate reagent and sample pipetting improves throughput
- Individual strips are timed separately allowing a wider variety of protocols to run simultaneously
- ChemWell 2 management software keeps track of assay timing requirements and automatically regulates assay start times to avoid conflicts. Mix and match ELISA or CLIA tests by strip row or by plate
- Microwell plates are run independently, each can be set at 37°C or ambient temperature



- ChemWell 2's programmable wash uses an 8-well wash head allowing for an entire strip to be washed at once with consistent timing
- Built in barcode reader tracks sample placement
- Optional liquid sensing disposable probe tips are available for sample dispensing



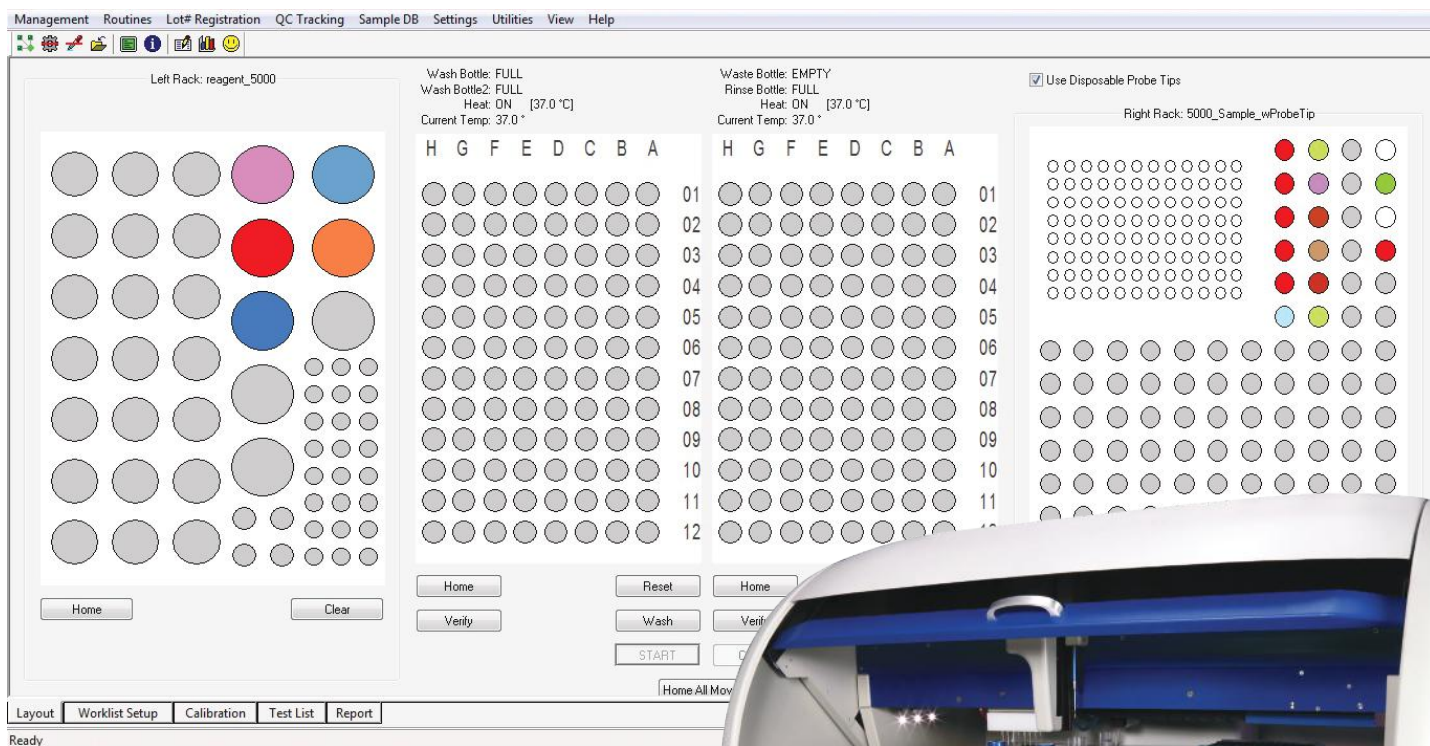
ChemWell[®] 2

Versatile • Flexible • Reliable • Accurate • Programmable • Two-Plate ELISA/CLIA Analyzer

- ChemWell 2's combination of hardware and software is designed to optimize ELISA/CLIA testing on one or two microwell plates.
- Follow prompts to program test kits, many flexible options. Once you have created your worklist, loaded the samples and reagents, ChemWell 2 will do the rest.
- ChemWell 2 comes with a host of reporting options, providing your laboratory with critical data in an organized printout or electronic document, reports are customizable
- Ideal for programming an assortment of microwell ELISA and CLIA kits including infectious diseases, hormones, tumor markers, auto immunity and toxins.



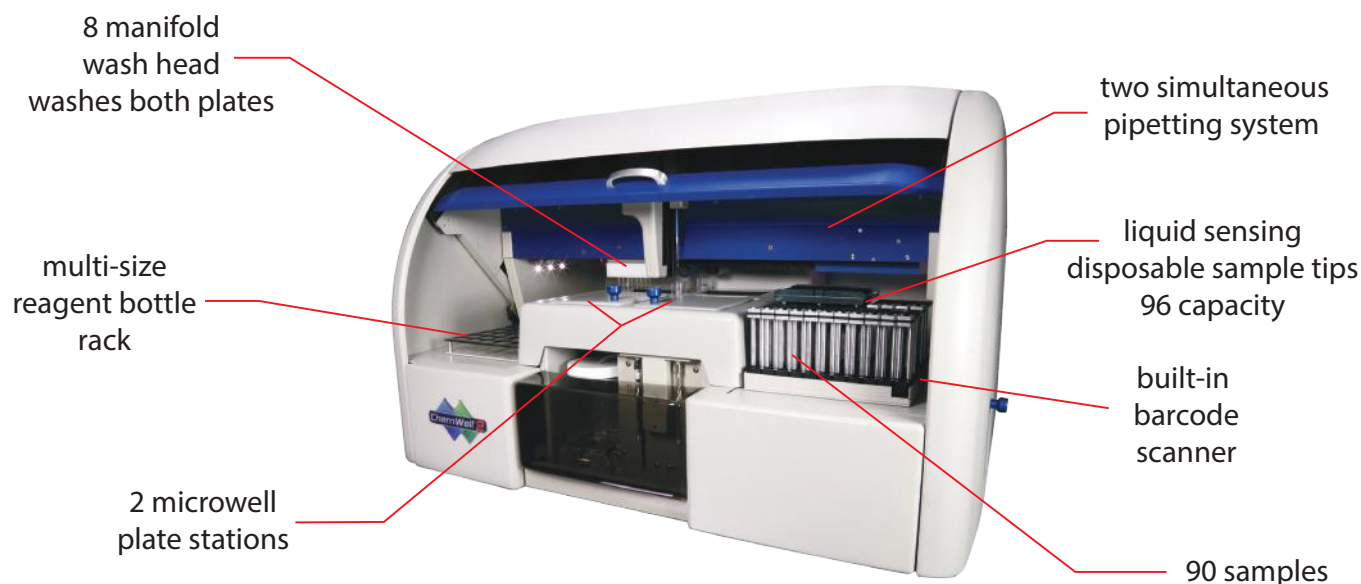
Holds 92 disposable tips and 90 samples



ChemWell 2's intuitive software design helps keep users informed of on-board processes by providing a visual representation of the entire workflow in an easy to understand graphical interface.

ChemWell 2's software options provide users the ultimate in Flexibility.





Fluid handling:	Pipetting range 5 μ L – 1.95 mL Typical reaction volume range of 200 μ L to 250 μ L
Probe:	Liquid sensing probe tips monitor remaining volumes, crash protection
ELISA reader:	Accuracy of $\pm 1\% + 0.01$ A or better up to 1.5 A and $\pm 2\%$ or better above 1.5 A
ELISA Optical filter range:	4 standard filters 405, 450, 492, 630 nm, optional additional filters available
CLIA reader:	Glow Luminescence
Sensitivity/Detection limit:	HRP 1×10^{-18} moles, ALP 1×10^{-21} moles
Detector:	Photomultiplier (PMT)
Spectral Response Range:	300-650 nm
Peak Wavelength:	400 nm
Standard sample rack:	90 sample capacity - serum vials or 13x100 mm tubes
Standard reagent rack:	Typically 29 - Assorted replaceable racks and custom designed racks are available for various bottle sizes
Barcode scanner:	Integrated barcode scanning with positive patient ID system
Light source:	Tungsten-Xenon lamp
Dimensions:	Height - 57.7 cm Width - 107 cm Depth - 62.4 cm Weight - 60 kg



Awareness Technology, Inc. USA & International
tel: +1 772 283 6540 sales@awaretech.com

Awareness Technology, Inc. Europe
tel: +43 (0) 2236 892465 info@awaretech.eu

Awareness Technology, Inc. Asia & Africa
tel: +971 (06) 557 80 58 info@awaretech.com

